

5MP DOME IP CAMERA

HX-D50L3-PoE-IP



H.265
Compression

DC 12V
PoE

Day & Night
Mode

30M
IR Distance

Built In Mic

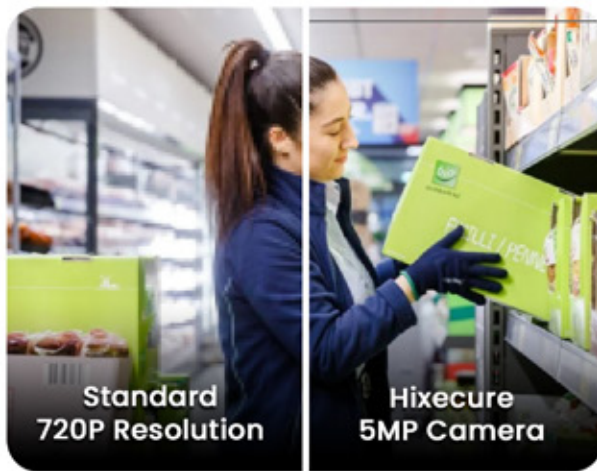
Outdoor
IP66

Product Feature

- Day and Night(IR-CUT)
- H.264/H.265 Video compression
- Support onvif
- Support POE
- Support audio

HIXECURE
technology tweaked, for better

5MP Dome IP Camera



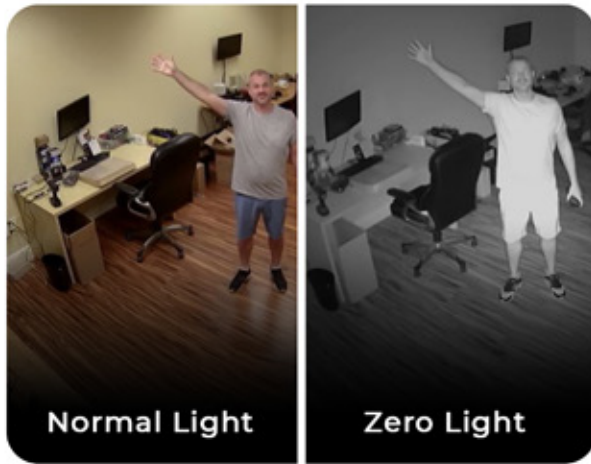
5MP Full HD Video Recording

Designed to reflect an improved picture quality in Full HD video, preventing pixilation in the video feed and allowing for a clear view of every detail.

Motion Detection

Camera recognises human detection and intelligent notifications, so you will only receive a warning when it is necessary. If there is enough variation between frames, a camera will turn on automatically.

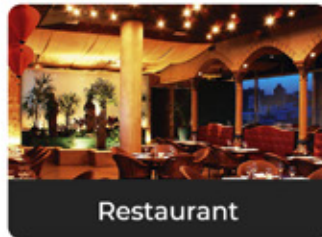
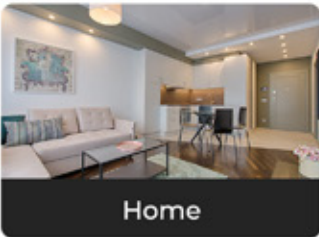




Day/Night Mode

Color video is captured by the camera in conditions of normal lighting. In low light and complete darkness, the camera records black and white video

Applications



Specification

Mega Pixel	5.0MP
Video Compression	H. 264/H. 264+/H265/H. 265+
Shutter Time	1/100s -1/120s
Lens	Fix lens:3.6mm,4mm,6mm,8mm,12mm optional;(With IR-CUT Built-in)
Video Stream	Main Stream: 1920*1080 Sub stream:640*360
Video bit rate	128Kbps-5096Kbps continuously-adjustable
Frame Rates	20 fps
Audio	G.711 A-Law @ 16bits 8kbps
Min. Illumination	Color: 0.5 Lux; B/w: 0.01 Lux
Protocols/Network function	Tcp/UDP/rtp/rtsp/rtmp/http/DDNS/P2P/ ONVIF 2.4
White Balance	Auto
Day & Night	Auto / Color / BW
3D-DNR	Auto
DRC	Auto
Mirror/Flip	On / Off
Privacy Masking	4 Zone Selectable
OSD	Date Time & Title
Network interface	RJ45 IOM/IOOM adaptive Ethernet interface
Users	4
Onvif	Support Onvif 2.4

IR LED	2 Array LED ; IR CUT filter with auto switch
IR LED distance	30 metres
POE	Support(External)
Special Feature	Support remote view by Mobilephone
Material	Plastics
Color	White
Working Environment	-10 °C-60°C , 10%-90% RH
Water Proof	IP66
Thunder Prevention	Standard IEC61000-4-5
Power supply	DC12V IA /POE module optional
Power consumption	≤6W